



Foulden Road Stoke Newington, London N16

NEXT MOVE
PROPERTY AGENTS

Foulden Road

Stoke Newington

London N16

Stunning wider than average five bedroom terraced Victorian house located moments from Church Street and The High Street.



DESCRIPTION

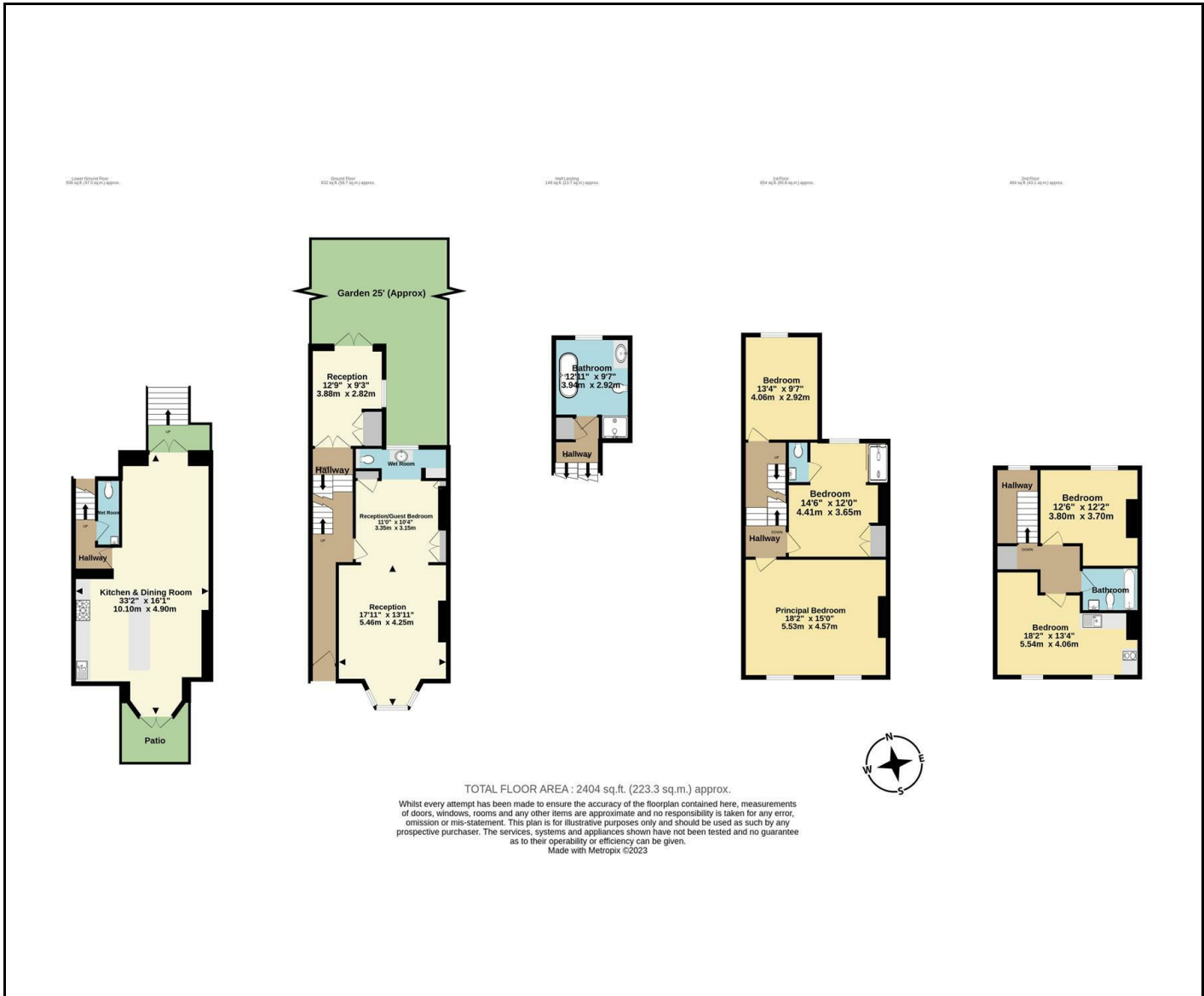
This fabulous property successfully blends modern and period styles to create a wonderfully contemporary family home which at its centre provides two huge floors of living and entertaining space both accessing the rear garden. The ground floor features a generous double reception room with high ceilings, painted floor boards and large bay window, the rear room is currently being used as a guest bedroom with ensuite. On the way down to the kitchen a further reception room boasts French doors leading out to a secluded garden. The lower ground floor houses a huge 33' dual-aspect kitchen/dining room with smart modern kitchen and large work-island, doors to the front open onto a patio area, and French doors to the rear lead out to the garden. There is also a wet-room on this floor. Moving up through the house, there is a stylish modern bathroom with open shower and roll-top bath, and three beautiful double bedrooms, including a wonderful 18' x 15' principal bedroom. On the top floor a smart bathroom sits between two more double bedrooms. Foulden Road is an attractive tree-lined street conveniently placed moments from an eclectic array of eateries, shops, pubs and coffee bars set out along Stoke Newington Church Street, The High Street and down towards Dalston's Kingsland Road. There are excellent transport links to The City and West End with numerous good bus routes, and trains from nearby Rectory Road Station (Overground) taking under fifteen minutes to Liverpool Street.



Freehold

Asking Price £1,500,000





Energy Efficiency Rating		Current	Potential
Very energy efficient - lower running costs			
(92 plus)	A		
(81-91)	B		84
(69-80)	C	71	
(55-68)	D		
(39-54)	E		
(21-38)	F		
(1-20)	G		
Not energy efficient - higher running costs			
England & Wales		EU Directive 2002/91/EC	