



Howard Road Stoke Newington, London N16

NEXT MOVE
PROPERTY AGENTS

Howard Road Stoke Newington London N16

Wonderfully spacious three bedroom ex-local authority garden maisonette located close to all good local amenities.



DESCRIPTION

Arranged over the ground and first floor of a low-level purpose-built block, the accommodation comprises a generous living room with door to the garden; separate kitchen-diner; modern bathroom and three beautiful double bedrooms.

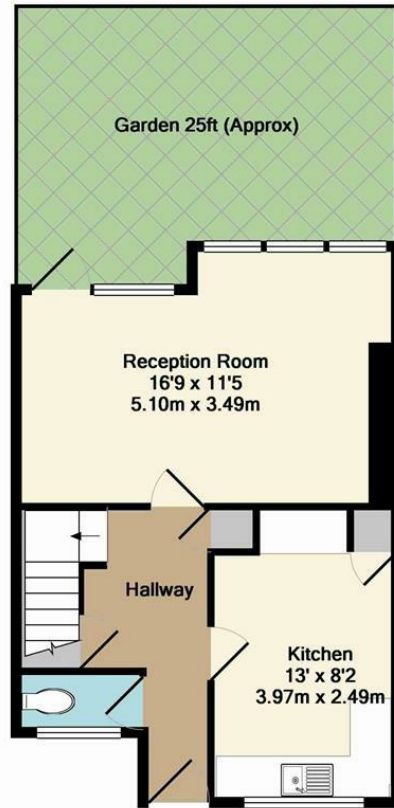
The property is situated on Milton Grove moments from shops and restaurants at Newington Green, and a short stroll from Stoke Newington Church Street and leafy Clissold Park. There are excellent transport links to The City and West End with numerous local buses, and trains from stations at Canonbury (Overground), Dalston Kingsland (Overground) and Dalston Junction (Overground).



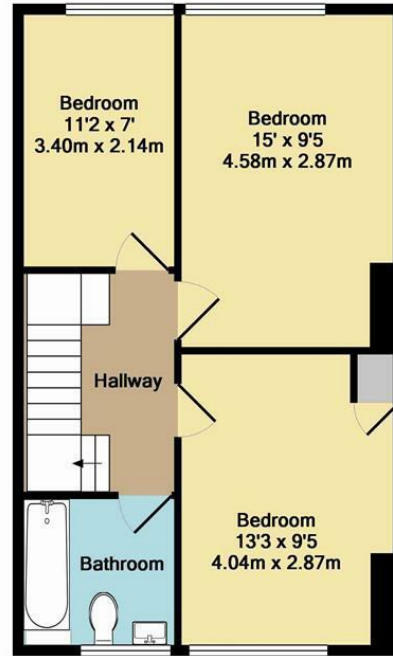
Leasehold

£595,000





Ground Floor
Approx. Floor
Area 369 Sq.Ft.
(34.3 Sq.M.)



1st Floor
Approx. Floor
Area 462 Sq.Ft.
(42.9 Sq.M.)

Howard Road, N16
Total Approx. Floor Area 831 Sq.Ft. (77.2 Sq.M.)

Illustration for identification purposes. Not to scale. All measurements are approximate and for guidance only. © Next Move 2012
Made with Metropix ©2012.



Energy Efficiency Rating		Current	Potential
Very energy efficient - lower running costs			
(92 plus) A			
(81-91) B			
(69-80) C			
(55-68) D		67	79
(39-54) E			
(21-38) F			
(1-20) G			
Not energy efficient - higher running costs			
England & Wales		EU Directive 2002/91/EC	

NEXT MOVE
PROPERTY AGENTS

n16@nextmove.com
020 7254 9709
63-65 Stoke Newington Church Street,
London N16 0AR

nextmove.com