



Burma Road Stoke Newington, London N16

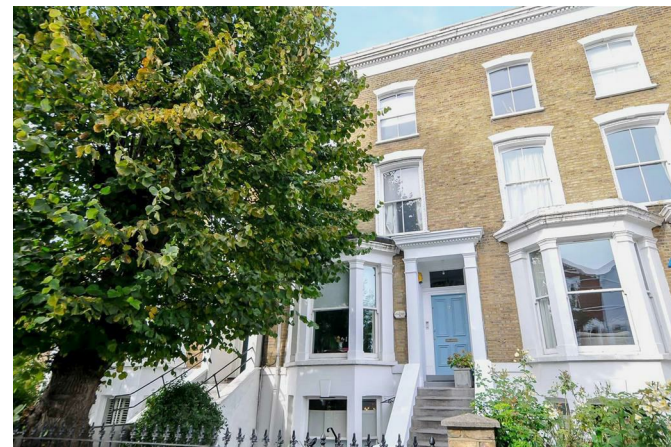
NEXT MOVE
PROPERTY AGENTS

Burma Road

Stoke Newington

London N16

Huge, three bedroom maisonette over three floors, with two terraces, moments from Church Street, Clissold Park and popular local schools.



DESCRIPTION

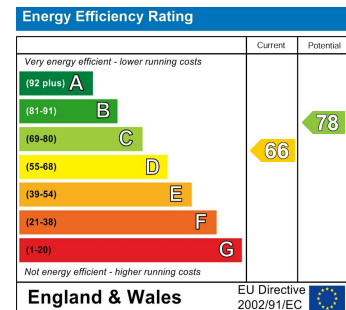
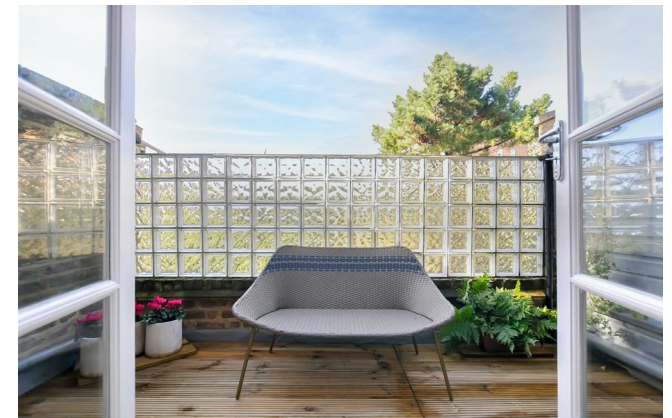
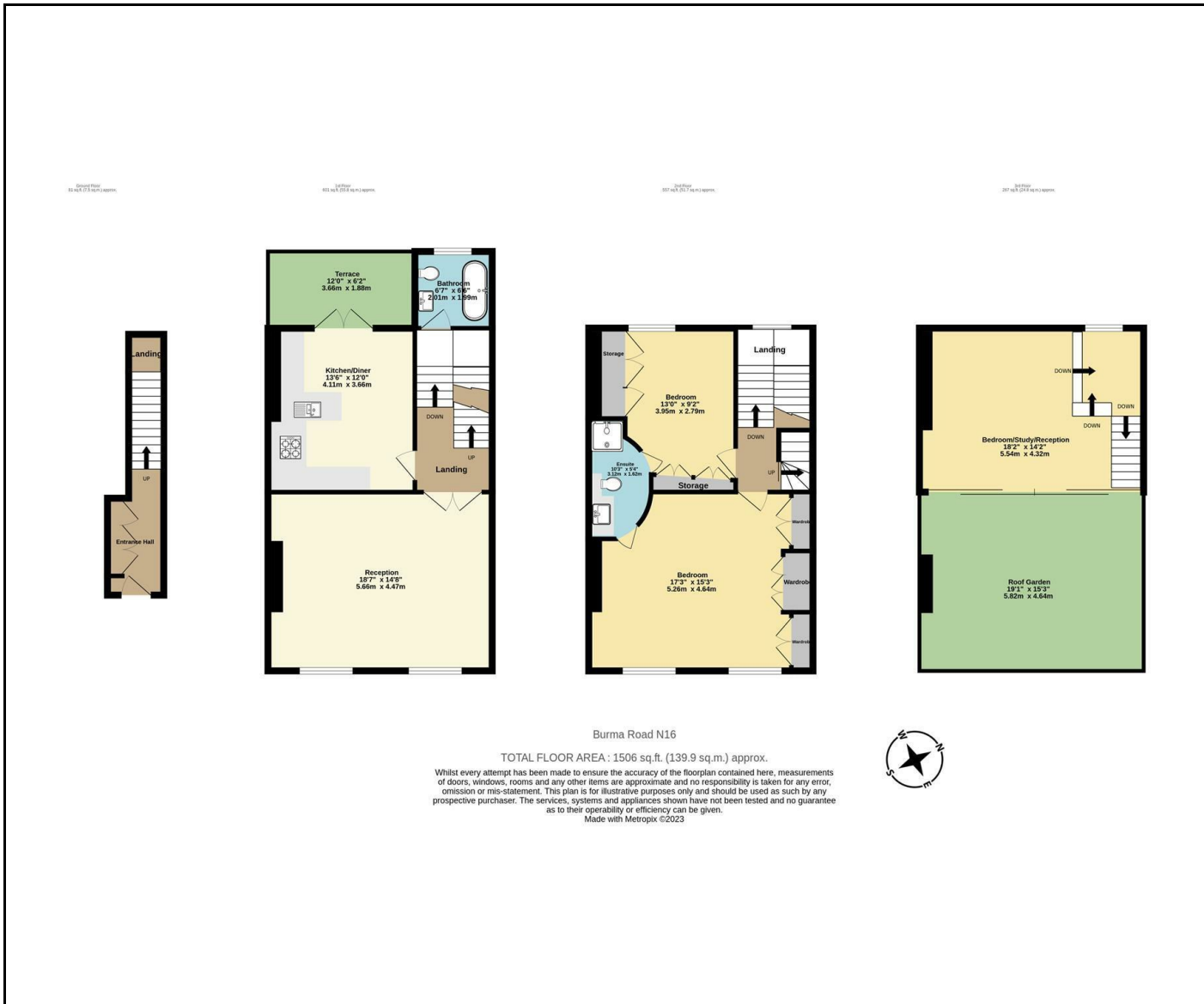
Unique property arranged over the upper floors of a substantial early-Victorian terraced house on one of Stoke Newington's most popular streets. This fabulous family home boasts elegantly proportioned rooms, high ceilings, two roof terraces, two bathrooms and period features. Entering on the raised ground floor, in excess of 1,500 sq ft accommodation is arranged over the three floors above, beginning on the first floor with a wonderfully generous living room with attractive original fireplace; and stylish well-appointed kitchen-diner with integrated quality appliances and a multitude of wall and base units. French doors open to a decked terrace neatly framed by a wall of glass blocks. There is also a smart modern bathroom on a half-level. The second floor features two beautiful double bedrooms, including a spacious 19' principal bedroom, both offer bespoke storage and share a cunningly conceived ensuite shower room. Stairs lead up to a glorious further reception room/third bedroom with a vaulted ceiling and full-width glazed doors opening out to a charming roof-top garden. The green open spaces of Clissold Park, and Stoke Newington Church Street's eclectic array of eateries, independent shops, pubs and coffee bars are all just a few steps away. There are excellent transport links to The City and West End with numerous good bus routes, and trains from stations at Canonbury (Overground), Manor House (Piccadilly line) and Stoke Newington (Overground).

Leasehold

£1,350,000







NEXT MOVE
PROPERTY AGENTS

n16@nextmove.com
020 7254 9709
63-65 Stoke Newington Church Street,
London N16 0AR

nextmove.com