



Smalley Close Stoke Newington, London N16

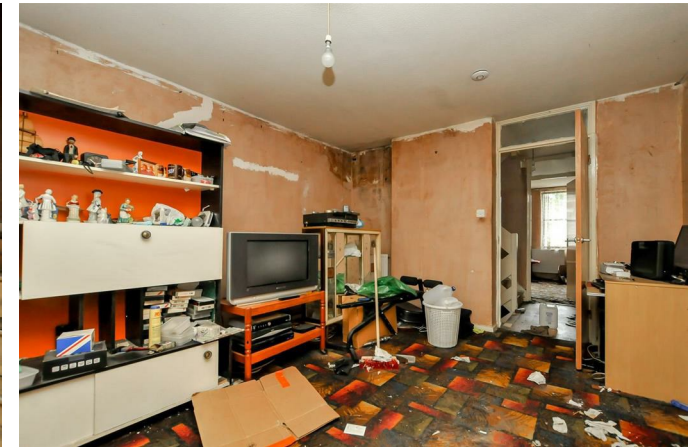


Smalley Close

Stoke Newington

London N16

Ex-local Authority three bedroom house with plenty of potential.



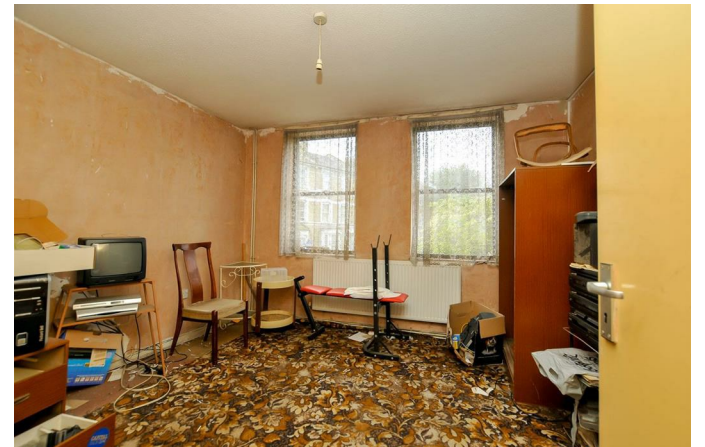
DESCRIPTION

Well-located moments from Church Street, The High Street and excellent transport links. In need of a bit of TLC this spacious property boasts a floor area in excess of 1,000 sq ft. The accommodation comprises a generous living room; separate kitchen-diner; bathroom; separate toilet and three double bedrooms.

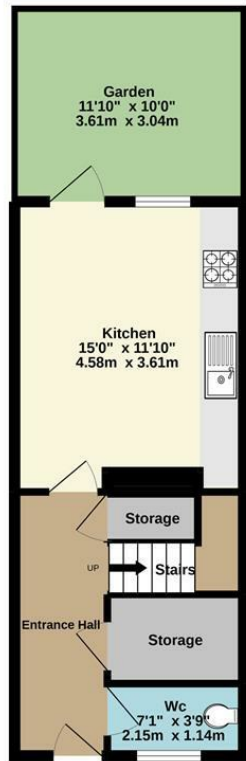


Freehold

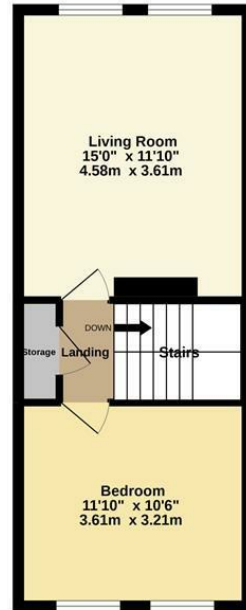
Asking Price £599,950



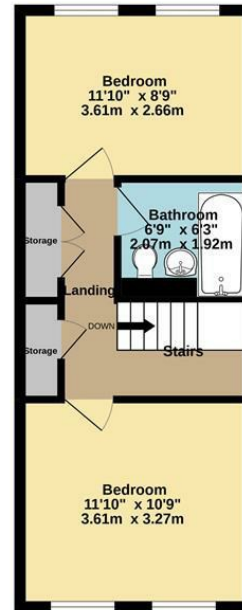
Ground Floor
334 sq.ft. (31.0 sq.m.) approx.



1st Floor
361 sq.ft. (33.5 sq.m.) approx.



2nd Floor
361 sq.ft. (33.6 sq.m.) approx.



Smalley Close N16

TOTAL FLOOR AREA: 1056 sq.ft. (98.1 sq.m.) approx.

Whilst every attempt has been made to ensure the accuracy of the floorplan contained here, measurements of doors, windows, rooms and any other items are approximate and no responsibility is taken for any error, omission or mis-statement. This plan is for illustrative purposes only and should be used as such by any prospective purchaser. The services, systems and appliances shown have not been tested and no guarantee as to their operability or efficiency can be given.
Made with Metropix ©2022.



Energy Efficiency Rating		Current	Potential
Very energy efficient - lower running costs			
(92 plus)	A		
(81-91)	B		
(69-80)	C		
(55-68)	D		
(39-54)	E		
(21-38)	F		
(1-20)	G		
Not energy efficient - higher running costs			
England & Wales		EU Directive 2002/91/EC	

NEXT MOVE
PROPERTY AGENTS

n16@nextmove.com
020 7254 9709
63-65 Stoke Newington Church Street,
London N16 0AR

nextmove.com